

# MEETING CAPACITY



Foyer Area: 8'x60'  
Doors in Ballroom 70.5"W x 79"H

## **Ballroom - 1 section**

920 square feet  
20'x46'  
14-foot ceiling

Classroom:	30-40
Hollow Square:	40
U-shaped:	36
Rounds:	40
Rounds 3/4 set:	40
Theater:	70-90
Conference:	40

## **Ballroom - 2 sections**

1,840 square feet  
40'x46'  
14-foot ceiling

Classroom:	80
Hollow Square:	50
U-shaped:	50
Rounds:	80-90
Rounds 3/4 set:	104
Theatre:	175
Conference:	48

## **Ballroom**

2,760 square feet  
60'x46'  
14-foot ceiling

Classroom:	135
Hollow Square:	70
U-shaped:	70
Rounds:	180-200
Rounds 3/4 set:	150
Theatre:	250
Conference:	66

## **Lyons Boardroom**

288 square feet  
12'x24'  
8-foot ceiling

Conference Table for 8

## **Lounge**

Aviators Sports Pub | 100 ppl  
Restaurant | 132 ppl  
Poolside Reception | 120 ppl

## **Tarmac**

500 square feet  
21'x26'  
8-foot ceiling

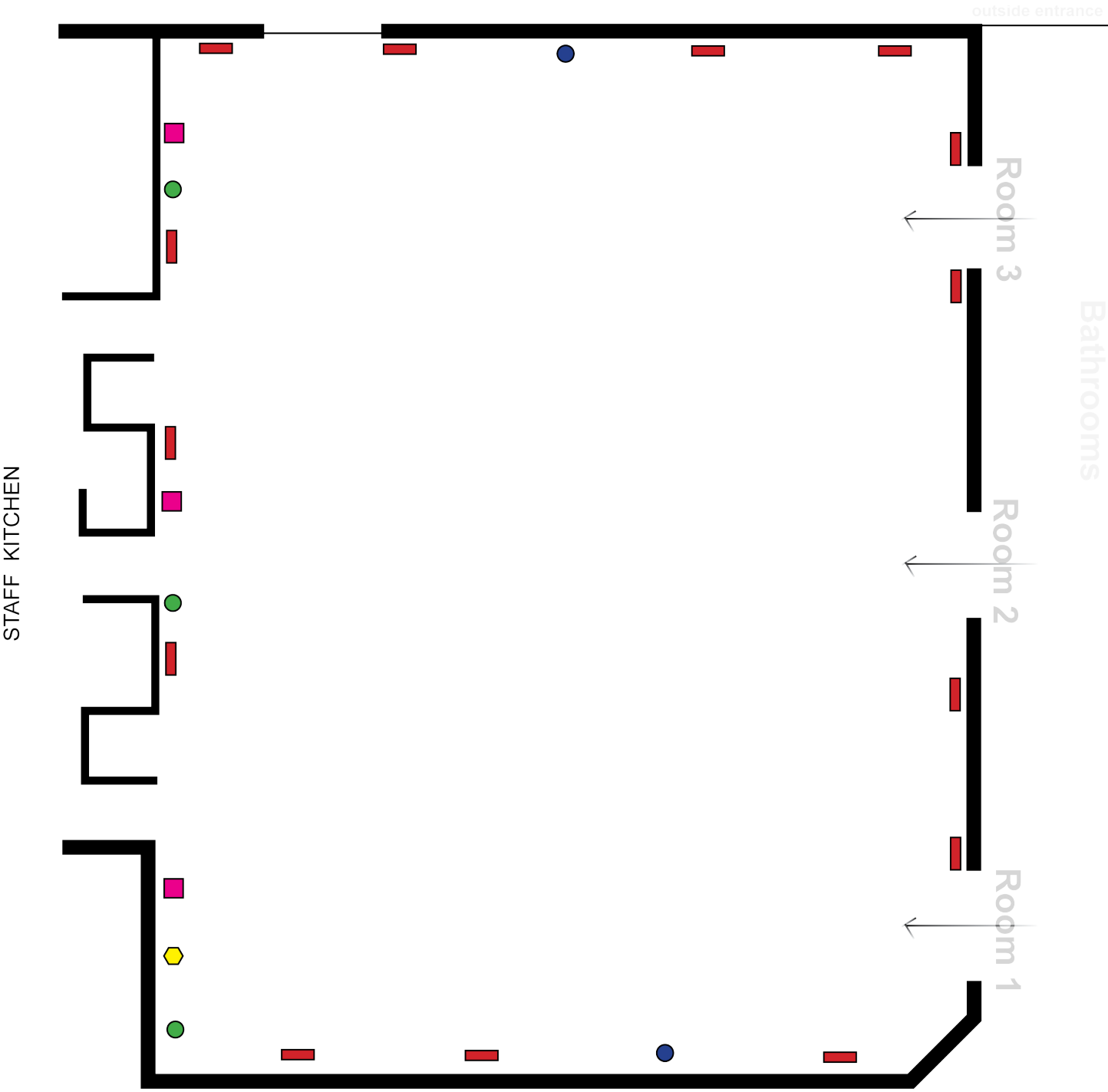
Classroom:	24
Hollow Square:	28
U-shaped:	24

**H** **Holiday Inn**  
AN IHG HOTEL

ST. PETERSBURG N' CLEARWATER

# “Concourse Ballroom” | Sections 1, 2, 3

Main Floor to the right of the lobby



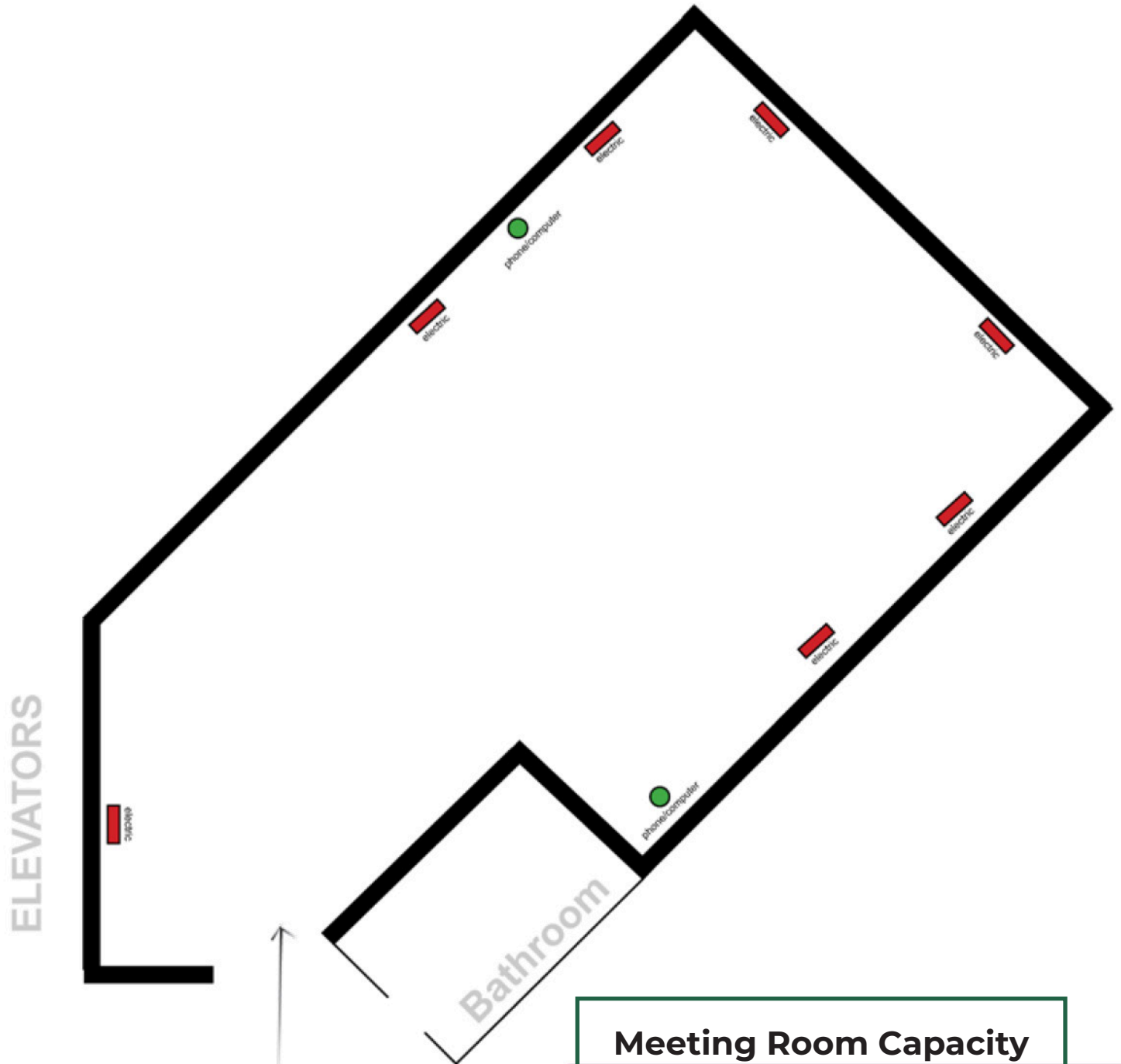
20'x46' = 1 section  
920 square feet

40'x46' = 2 sections  
1,840 square feet

60'x46' = 3 sections  
2,760 square feet

# “Tarmac Meeting Room” | 2nd Floor

To the left of the main lobby



## Meeting Room Capacity

500 square feet | 21' x 26' | 8' ceiling

Classroom:	24
Hollow Square:	28
U-Shaped:	24
Theatre:	50